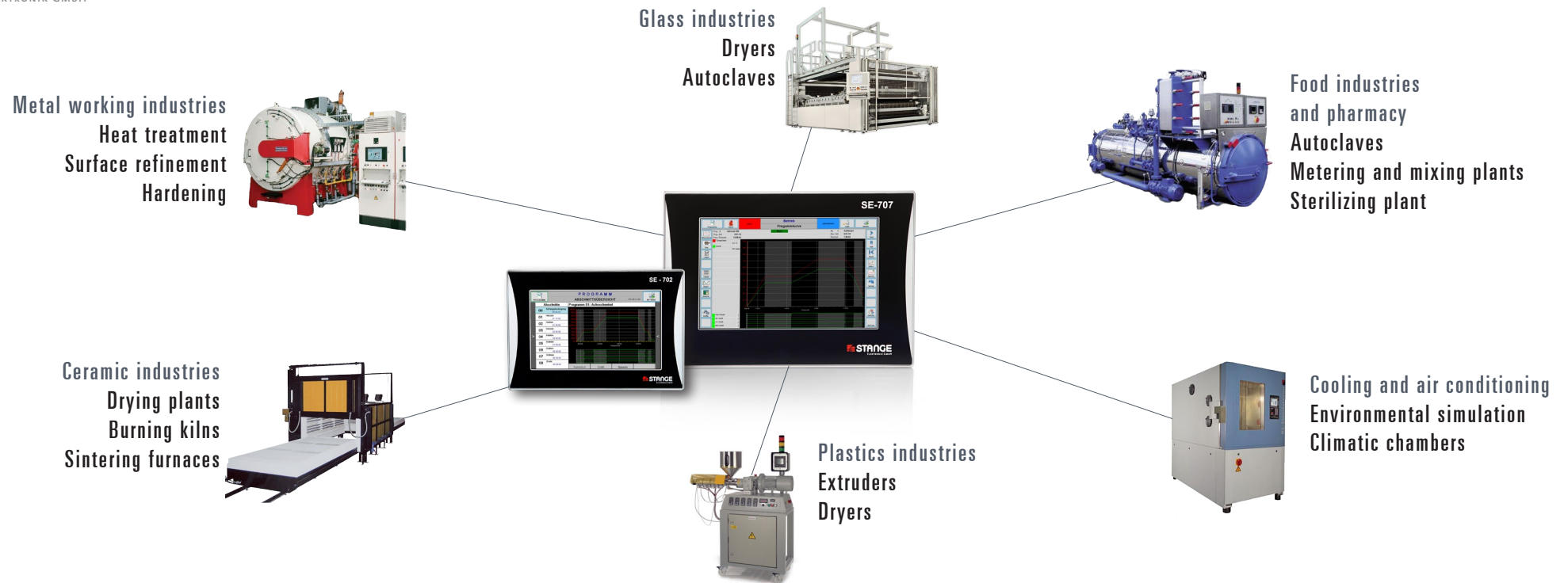


SE-707 - The Program Controller XL

high performance • user friendly • premium quality



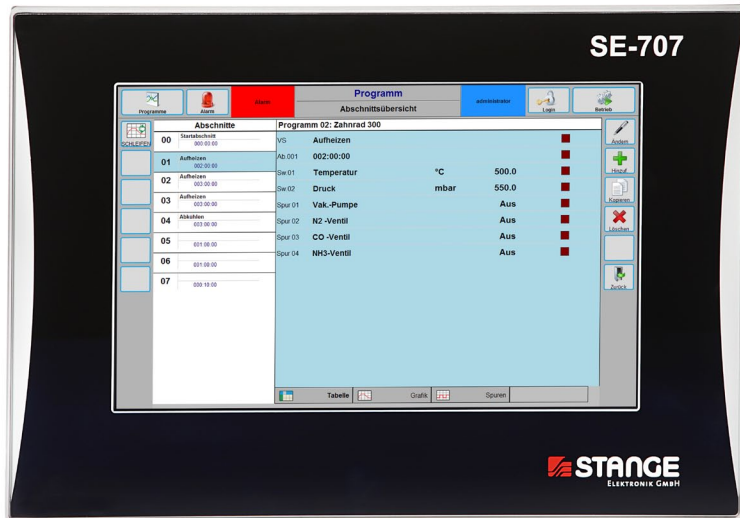
SE-707 - The Program Controller for your business applications

The SE-707 is a universal compact automation device for small and medium-sized control tasks, which can be configured optimally for the required automation task by using the integrated software function modules and additional CAN peripherals.

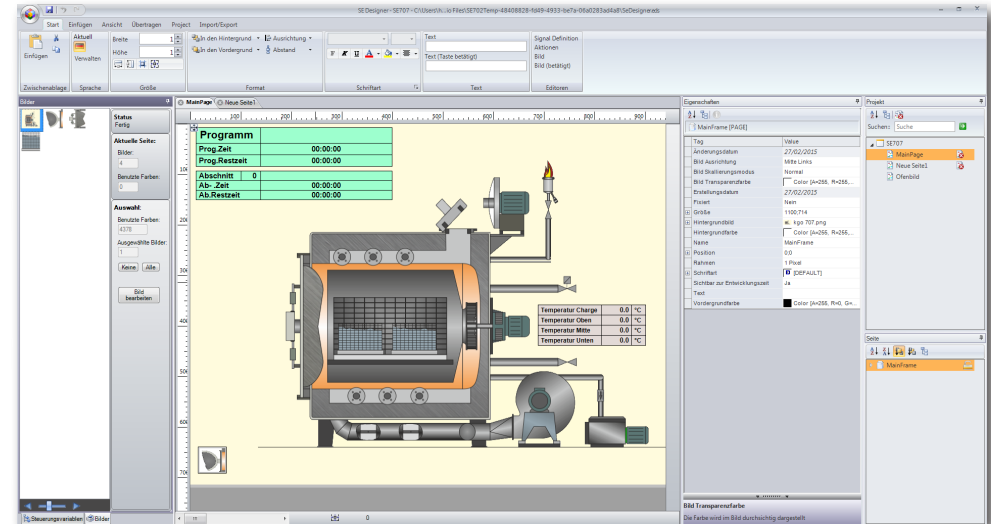
Necessary linkages of the function modules among each other as well as connection to I/O field are created by means of the integrated PLC function (instructions list editor).

Analogue device functions like actual values, set values, programmer, controller, tolerances, limit values etc. can be adapted and/or set easily at the device just like the PLC without external tools. This also applies for the other device functions like e.g. the extensive alarm processing with historical alarm recording.

Plant visualization can be realized by an external graphic editor which provides a good and clear plant overview and the actual process condition.



Program view



SE Designer for creating the visualisation

EXCELLENT: PRICE / PERFORMANCE

- Extensive basic equipment inclusive:
- Programmer
 - Controller
 - Alarm system
 - PLC
 - High-resolution glass display
 - Capacitive multi-touch screen with gesture control
 - Stainless steel housing
 - Built up of high-quality parts
 - Investment protection by more than 10 years spare part availability

EXTENSIVE OPTIONAL EQUIPMENT

- Recorder
- Visualisation
- C-level
- Humidity calculation
- Interface modules (PROFINET, PROFIBUS)
- Operating hours counter
- S7-Modbus-TCP
- Language packs

Bezeichnung	Retorten-Temperatur
Regler-Istwert	01 (Istwert 01)
Regler-Sollwert	01 (Temperatur)
Regler-Typ A	PID-stetig
Regler-Typ B	PID-stetig
Anzeigeformat	##0
Bereichs-Untergrenze	0
Bereichs-Obergrenze	1200
Einheit	°C
Ersatz-Istwert-Typ	Formelwert
Ersatz-Istwert Nr.	08 (Retorten-Simulation b)
Ersatz-Sollwert-Typ	Keiner
Ersatz-Sollwert Nr.	
Y-Arbeitspunkt	0.0
Y-Min für gleit. Begrenzung A	100.0
Y-Max für gleit. Begrenzung A	100.0

Individual view control zone

Programme	Zahnrad 300
02 Zahnrad 300	Abschnitte 8
05 Welle 200	Schleifen 0
06 Welle 300	Gesamtzeit 0013:10:00
07 Welle 400a	Erstellt 05.12.14 15:19:29
08 Welle 500	Geändert 01.01.08 13:05:01
09 Test	Status
15 Welle 600	
55 Bremskolben	
67 Ritzel 150	
68 Ritzel 200	
69 Ritzel 250	
70 Test	

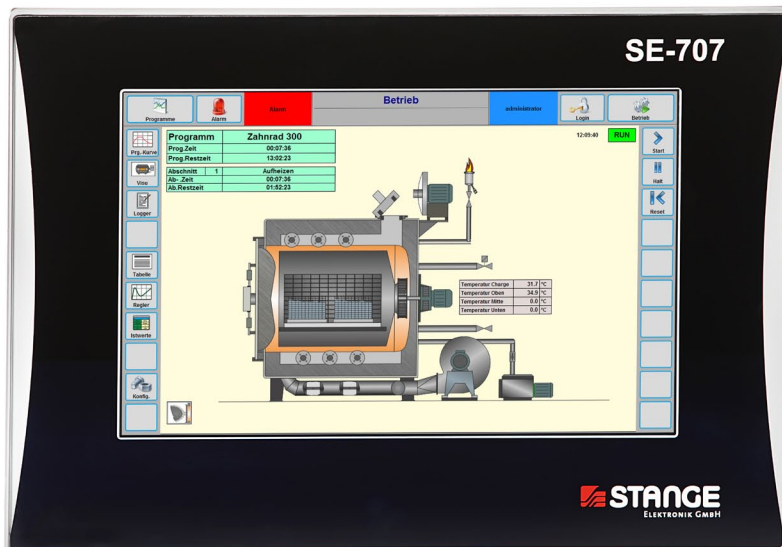
Program overview

EASY CONFIGURATION

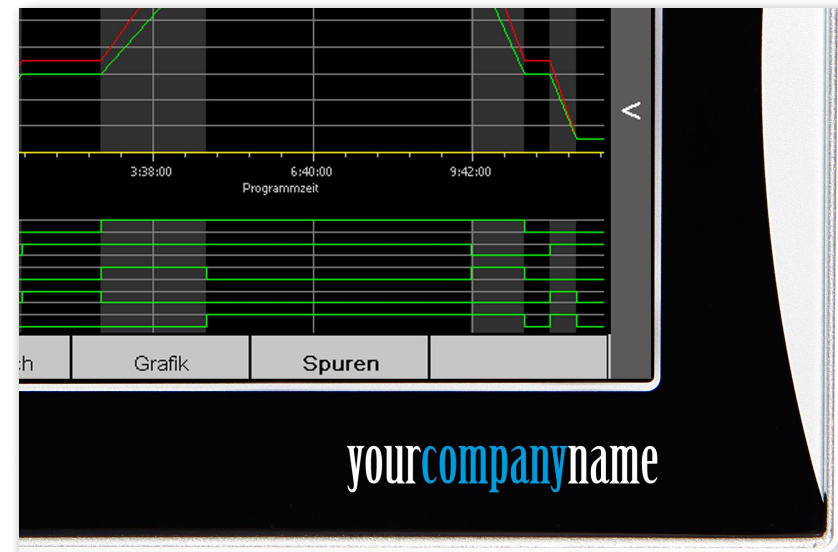
- Easy menu-driven configuration without programming knowledge
- Predefined function groups
- Configuration of functions possible without higher previous knowledge
- Easy integration of analogue functions via functional in-/outputs
- PLC STL with comments, status and search function

INTUITIVE OPERATION

- Multi-touch screen
- Lists scrollable
- Intuitive operating logic
- Recorder
- User administration
- Online language switching
- Real-time set and actual value diagram
- Visualisation with 16 million colours, 1280 x 800 pixels (130 DPI)
- Client operation via MS Windows



Program controller with device visualization



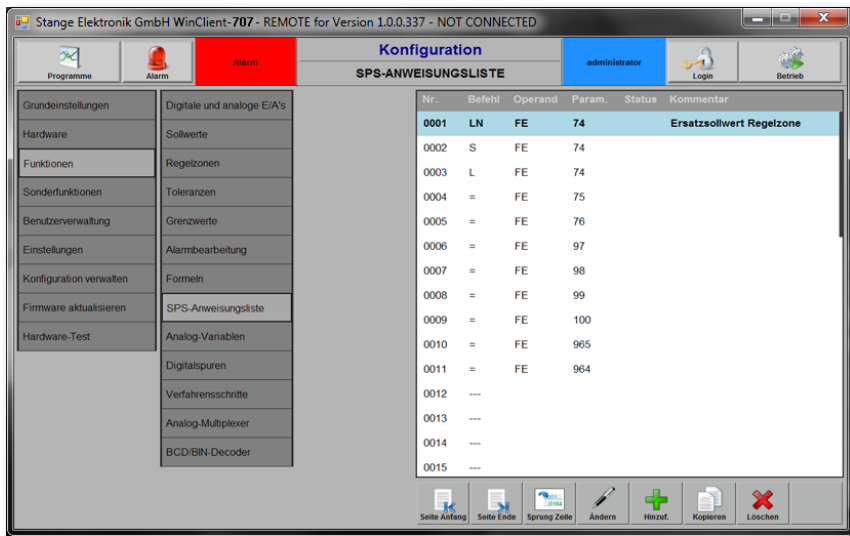
Program controller in custom design

HIGH-QUALITY DESIGN

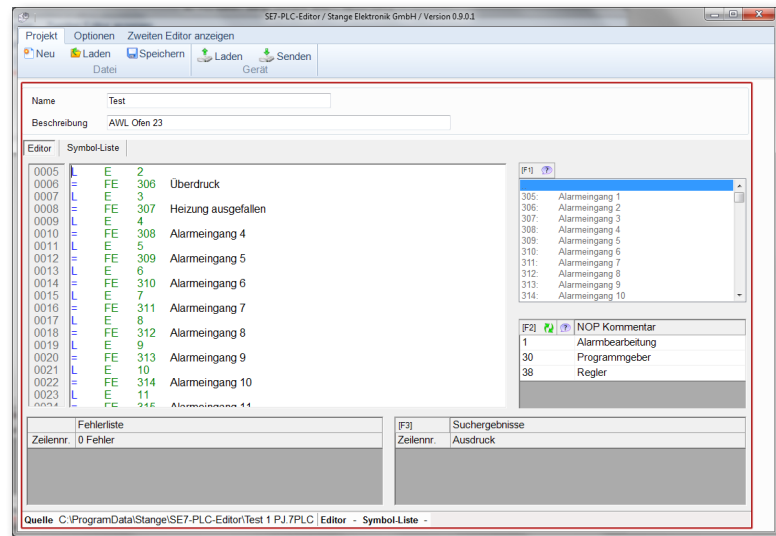
- High-quality manufacturing
- High-quality materials
- Stainless steel housing
- Front panel with glass touch in aluminium mounting profile
- Front panel optional in custom design

STANGE SERVICES

- Technical consulting with manufacturer know-how
- Task analysis and selection of components
- Free support hotline
- Repair center for short repair times
- After-sales service
- Service offices in China and India



VNC Remote Control / Client Operating Software



PLC Editor

Operating Software

- Client operating software SE-Config-Print**
- PC software for device operation with input keyboard
 - Access to one device from several PCs without restrictions for the operator
 - Access authorisation via login code

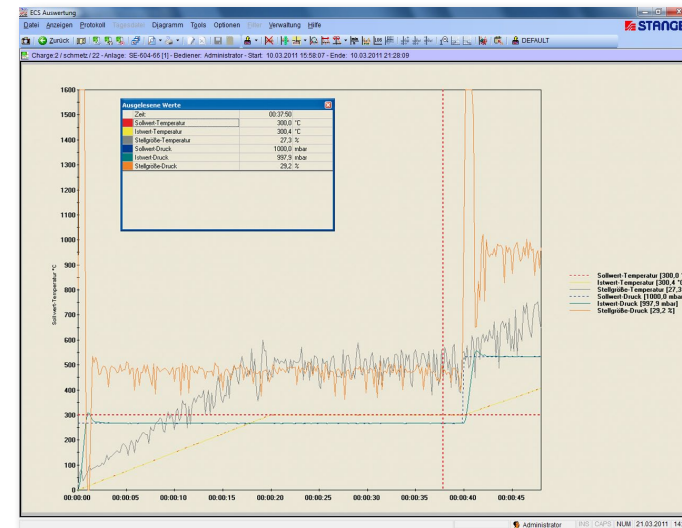
CONFIG.-OUTPUT/PLC EDITOR

- Configuration Output:**
- Device configuration access via PC software
 - Printout of the complete configuration data
 - Data storage as PDF and/or Word file

- PLC Editor:**
- Editor for editing the device statement list
 - Display of two statement lists at the same time to take-over already existing functions
 - Search function
 - Structure by networks
 - Assignable symbol list



Data Recorder with Zoom Function and Ruler



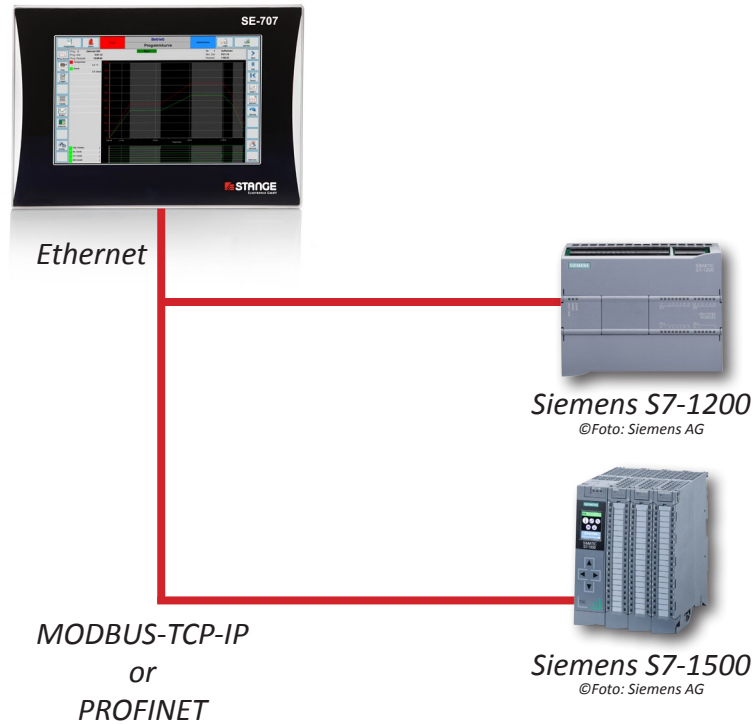
Evaluation Software ECS-AW

OPTION: 16/32 CHANNEL RECORDER

- Free configurable 16/32 channel data recorder
- Storage of all alarms according to each log file
- 20 configurable header data fields for each log file
- Text field for further information to each log file
- Analysis with super zoom function and ruler in the SE-707 program controller
- Intermediate storage of 200 batch files and/or daily files

EVALUATION SOFTWARE ECS-AW

- Low-cost evaluation software ECS-AW for PC
- Graph evaluation with all stored channels
- Free configuration of all parameters (channels, colours, legend etc.)
- Any numbers of configurations storable
- Zoom positionable anywhere with the mouse
- Cross-hair to read off detailed values
- Finished files are automatically collected via Ethernet
- User-friendly evaluation options
- Easy convert to CSV or XML format



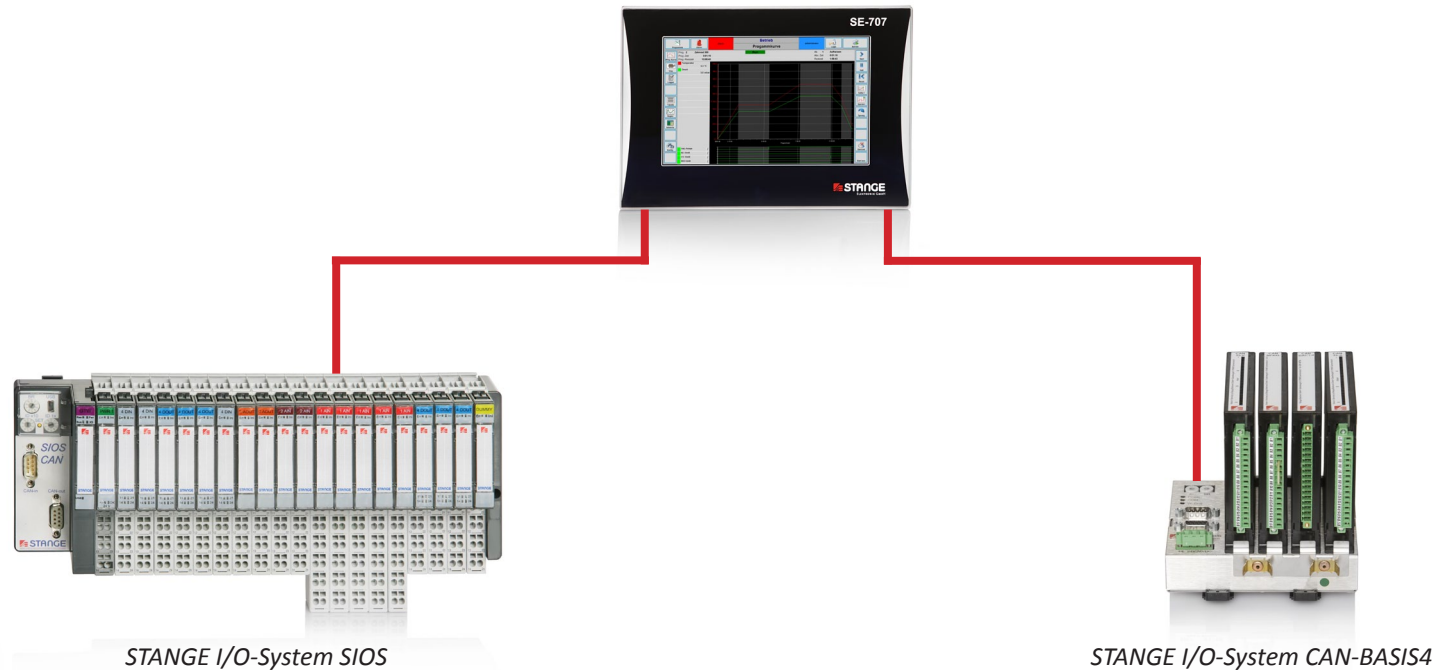
SE-707 with Profinet Interface

INTERFACE FOR S7-1200/1500

- SE-707 as program controller OP with data recorder for the S7
- Use of the low-cost S7-1200 for digital connections
- Available interface for SIEMENS S7-1200/1500
- Data blocks for the S7 are included in delivery (plug & play)
- Mirroring of all SE-707 function blocks into the S7;
Thereby the function blocks of the SE-707 are available in the S7 TIA portal

PROFINET INTERFACE

- SE-707 as program controller OP with data recorder for the S7
- Available interface for SIEMENS S7-1200/1500
- Data blocks for the S7 are included in delivery (plug & play)
- Mirroring of all SE-707 function blocks into the S7;
Thereby the function blocks of the SE-707 are available in the S7 TIA portal



STANGE-SIOS I/O-MODULES

CAN bus connection group for up to 64 modules:

- SIOS-IW1-XL, 1 universal analogue input
- SIOS-IW2, 2 analogue inputs (standard signal)
- SIOS-DAC2, 2 analogue outputs
- SIOS-DI4, 4 digital inputs
- SIOS-DO4, 4 digital outputs

STANGE-CAN I/O-MODULES

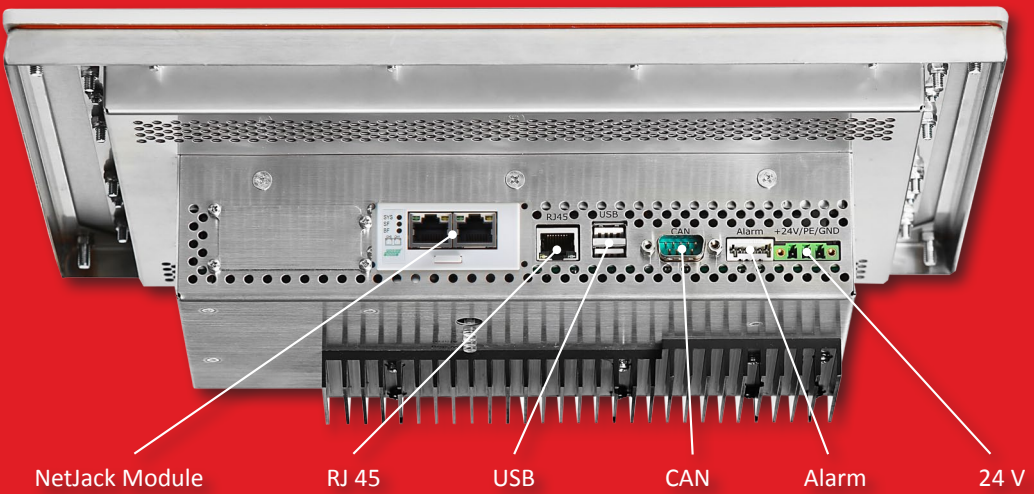
CAN bus connection group for up to 4 modules:

- CAN-IW4-XL/CAN-IW8-XL, 4/8 analogue inputs
- CAN-IW8-Q, 8 standard signal inputs
- CAN-DAC1/2/4, 1, 2, 4 analogue outputs (DAC)
- CAN-E16A16, 16 digital inputs/16 digital outputs
- CAN-E32, 32 digital inputs
- CAN-A32, 32 digital outputs
- CAN-REL8-8A, 8 relay outputs

Programmer	
Programs:	99 (optional: 250)
Loops per program:	8
Set values:	8 (optional: 30)
Digital tracks:	32 (optional: 64)
Segments:	max. 50 per program
Process steps:	max. 50, freely configurable
Controller	
Control zone:	8 (optional: 20)
Controller types:	PID linear, 2-point, 2-point PID, 3-point, 3-point PID, 3-point stepping (PI), configurable
PID parameter:	8 parameter sets
Tolerance band:	1 per control zone
Limit values:	2 limit values per control zone
Formula	
Formula:	8 (optional: 20)
Operations:	+,-, *, /, (,), square root, e ^x , Lg (logarithm), absolute value, sinus, cosine
Tolerances	
Tolerances:	16 (optional: 40)
Tolerance outputs:	32
Comparisons:	Av-Sv, Av-Av, X-Sv, X-Av, X-X

Limit Values	
Limit values:	16 (optional: 40)
Possible values:	Sv, Av, X, variable value, Y, controller Av, controller Av
Alarms	
Alarms:	64 (optional: 200); internal error alarms 16, alarm priorities 8, alarm delays 8 (= priorities), 0,1 ... 99,9 sec, configurable, alarm processing 1:1, binary or BCD, configurable, system alarm output, visual and acoustic signal, acknowledgement of individual alarms selective
Analogue Multiplexer	
MUX modules:	5 (optional: 10)
Possible values:	Sv, Av, formula value X, variable
Analogue inputs:	4 per MUX module
Internal PLC Function	
Programming:	statement list (STL)
Statements:	max. 3.200
Commands:	logical commands, timer commands (switch-on-, switch-off-delay, time impulse)
Number of timers:	64
Number of flags:	512
Cycle time:	100 ms
I/O system: STANGE SIOS or CAN (via CAN-Bus)	
16 analogue inputs, 16 analogue outputs, 64 digital inputs, 64 digital outputs (optional: 48 analogue inputs, 32 analogue outputs, 200 digital inputs, 200 digital outputs)	

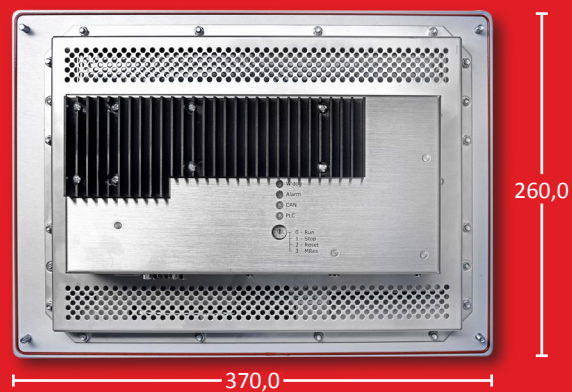
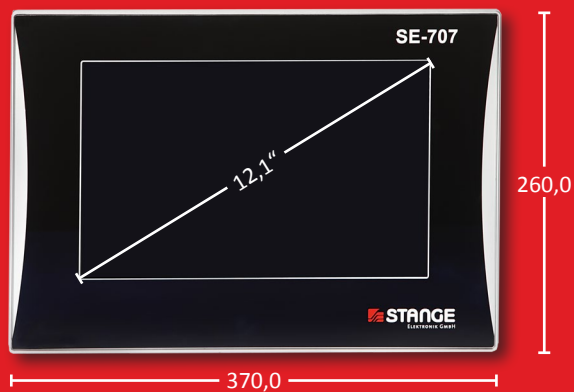
FUNCTIONS



Display	
Display:	TFT LCD 30.7 cm (12.1")
Resolution:	1280 x 800 pixels (WXGA)
Number of colours:	16 million colours
Background lighting:	LED
Front screen:	Glass 3 mm
Operation:	Capacitive touch
Protection Class	
Protection class front:	IP 65
Protection class back:	IP 20
EMC interference resistance:	EN 61000-6-2
Electromagnetic radiation:	EN 61000-6-3
Processor / Memory	
Processor:	Freescale™ i.MX 6 ARM, 800 MHz
Main memory:	1 GB DRAM
Retain memory:	1 MB SRAM, battery-buffered
microSD memory card :	≥ 1 GB for Firmware
Interfaces	
I/O interfaces:	CAN Master, Modbus TCP-Slave, S7-Modbus (option), Profibus DP-Slave (option), Profinet IO-Device (option)
System LEDs:	PLC, CAN, Alarm, Watchdog
Ethernet:	10/100 1x USB: 2.0 2x CAN: 1x

Performance Data	
Power supply:	24 V DC (18 ... 36V)
Operation:	Capacitive touch
Galvanic separation:	Yes
Power consumption:	Typ. 20 W
Battery back-up:	Lithium battery
Real-time clock (RTC):	Date/time
Operating temperature:	0 ... 45 °C
Operating System	
Operating system:	Windows Embedded Compact 7
Dimension / Weight	
Dimension (W x H x D):	370 x 260 x 106 mm
Weight:	3.7 kg

TECHNICAL DATA



LOCATIONS & REPRESENTATIONS

Parent Company

STANGE Elektronik GmbH
Rudolf-Diesel-Str. 15-17
51674 Wiehl
Fon: +49 (0) 2261-95790
Fax: +49 (0) 2261-55212
E-Mail: info@stange-elektronik.de

Office Thuringia

STANGE Elektronik GmbH
Wandersleber Str. 1b
99192 Apfelstädt
Fon: +49 (0) 36202-75090
Fax: +49 (0) 36202-750991
E-Mail: info-th@stange-elektronik.de

Office India

SukhSwapna, R.L.117, Milap Nagar
M.I.D.C, Dombivli-East, Thane
421203 Maharashtra
Fon: +91 750 692 7280
adeshpande@stange-elektronik.com

Office Shanghai

Room No.1609B, Shenergy International
Building, No.1 Middle Fuxing Road
200021 Shanghai
Fon: +86-21-64811741
E-Mail: info-ch@stange-elektronik.com

Office USA

1778 Center Rd
Avon, Ohio 44011
Fon: +1 330-313-6993
DLongenette@stange-elektronik.com

USA

Heat Treating Equipment
82 Heron Drive
SC 29644 Fountain Inn
Fon: +1 864-915-7584
rmono@charter.net
www.htetps.com

Japan

Nippon S.T. Johnson
No.2-6, Kojimachi 3-chome
102-00 83 Chiyoda-ku, Tokyo
Fon: +81 3-5210-5211
Fax: +81 3-5210-5210
Internet: www.njc-net.co.jp

Italy

Metalconsulting S.r.l.
v.C.P. Taverna 122
20050 Triuggio (MI)
Fon: +39-0362-91 83 94
Fax: +39-0362-97 83 28
Internet: www.metalconsulting.it

Spain

ACONTROLbcn
Passeig Torras i Bages
08030 BARCELONA
Fon: +34 648 29 00 62
E-Mail: acontrolbcn@gmail.com

Czech Republic

ECOSOND s.r.o.
K Vódarne 531
257 22 Cercany
Fon: +420-317-777-772
Fax: +420-317-777-772
Internet: www.ecosond.cz

Brazil

TECPROPRO
Rua Eleonora Cintra, N° 469
Tatuapé, São Paulo, SP
Fon: +55-11-3042-3790
Internet: www.tecpropro.com



stange-elektronik.com

